

# MONGOLFIERA SWAROVSKI ©

PLACCATO ORO | GOLD PLATED  
CROMO | CHROME

FACMGPO -- OR  
FACMGPO -- CR

## MONGOLFIERA



Come un gioiello - nasce dalla stessa tecnologia e si fregia della stessa unicità - è realizzato a mano. Un dettaglio di sorprendente raffinatezza.

Like a jewel - born from the same technology and boasting the same uniqueness - it is handmade. A surprisingly refined detail.



STRASS

ORO | GOLD  
CROMO | CHROME

FACSTP009OR  
FACSTP009CR



RICCIO

ORO | GOLD  
CROMO | CHROME  
BRONZO | BRONZE

FACRCPO -- OR  
FACRCPO -- CR  
FACRCPO -- BR



RIFLESSO

CROMO | CHROME

FACRFPO -- CR



TONDO

CROMO | CHROME

FAC07PO



OVALE SATINATO

CROMO SATINATO |  
SATIN CHROME

FAC11PO



BRONZO LAVORATO

BRONZO LAVORATO |  
WROUGHT BRONZE

FAC12PO



CERAMICA BIANCA

BIANCO | WHITE

FAC04PO



CERAMICA AVORIO

AVORIO LAVORATO |  
WROUGHT IVORY

FAC10PO

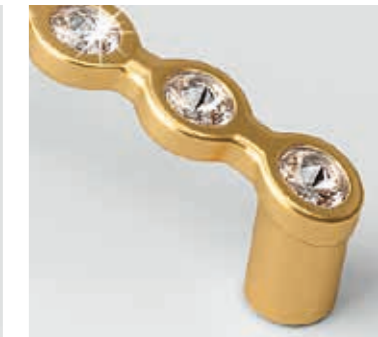
# MANIGLIE | HANDLES

## STRASS



ORO | GOLD  
CROMO | CHROME

FACSTMA -- OR  
FACSTMA -- CR



## FIOCCO



CROMO | CHROME

FACFCMA -- CR



## RICCIO



ORO | GOLD  
CROMO | CHROME  
BRONZO | BRONZE

FACRCMA -- OR  
FACRCMA -- CR  
FACRCMA -- BR



## ALA



CROMO | CHROME  
NERO OPACO | MATTE BLACK

FACALMA -- CR  
FACALMA -- SH



SOLO PER BASI CURVE  
ONLY CURVED BASES

# MANIGLIE | HANDLES

SLIM



CROMO|CHROME  
NERO OPACO|MATTE BLACK



SOLO PER BASI CURVE  
ONLY CURVED BASES

FACSLMA -- CR  
FACSLMA -- SH

ROSSELLA



CROMO|CHROME  
BRONZO|BRONZE

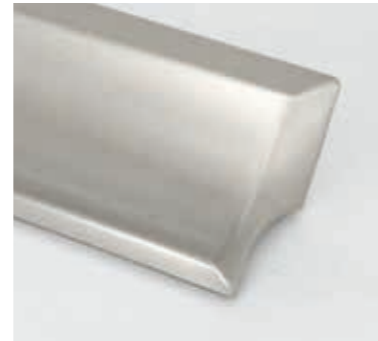


FACRSMA -- CR  
FACRSMA -- BR

RUBEN 160



CROMO|CHROME



FACRBMA -- CR

RUBEN 96



CROMO|CHROME



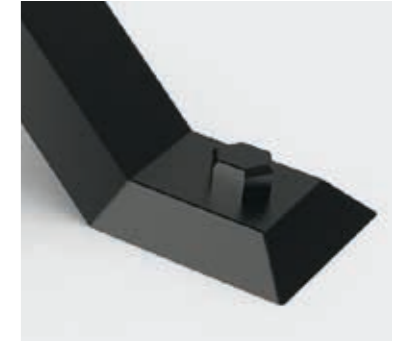
FACRBMA096 -- CR

# MANIGLIE | HANDLES

INDIA 160



NERO OPACO|MATTE BLACK

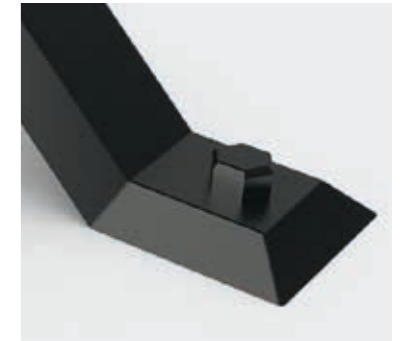


FACINMA -- SH

INDIA 96



NERO OPACO|MATTE BLACK

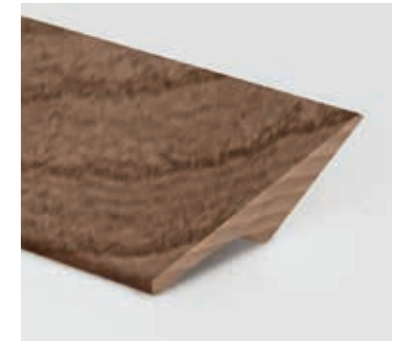


FACINMA096 -- SH

VALENTINA 160



DISPONIBILE IN TUTTE LE FINITURE EBAN  
ALL EBAN FINISHES AVAILABLE

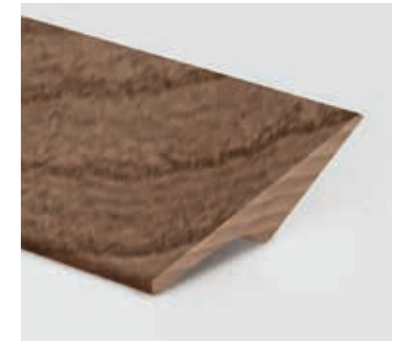


FACV160

VALENTINA 96



DISPONIBILE IN TUTTE LE FINITURE EBAN  
ALL EBAN FINISHES AVAILABLE



FACV096